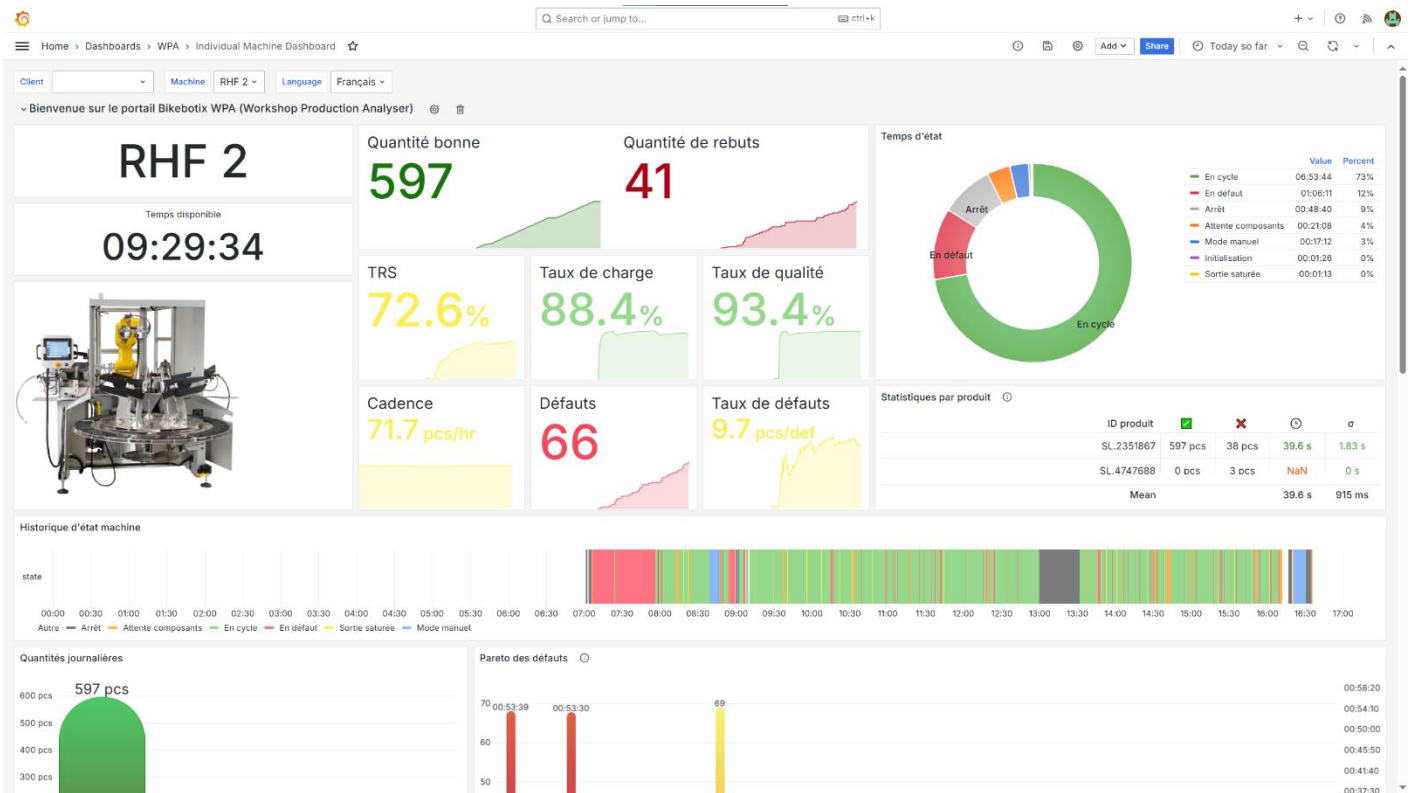




WPA

WORKSHOP PRODUCTION ANALYSIS



To improve the productivity of your bicycle or wheel workshop, the first step is to collect data from field and then to analyze them.






WPA is proposing the connectivity level together with the data analysis process to give you a clear view of your activity on a cockpit showing your relevant KPI.

Data are stored in the cloud and accessible from anywhere as far as an internet connection is available



With more than 50 years of experience, **Mach1 Machinery** has given way to **BIKEBOTIX** to offer you an even more comprehensive offer.

Alongside expert and highly qualified development and customer service team 5 areas of expertise.

-  **WHEEL BUILDING**
-  **RIM MANUFACTURING**
-  **BIKE ASSEMBLY**
-  **DATA MANAGEMENT**
-  **BIKE TOOLS**

A global presence
French know-how since 1971



Proud to be a major player and a reference partner, **BIKEBOTIX** exports worldwide solutions based on 4 fundamentals:

INNOVATION, PERFORMANCE, RELIABILITY and FLEXIBILITY.



BIKEBOTIX
SOLUTIONS IN MOTION

294 route des grands bois
74370 Villaz France
+33 450 220 639
machines@bikebotix.com
www.bikebotix.com